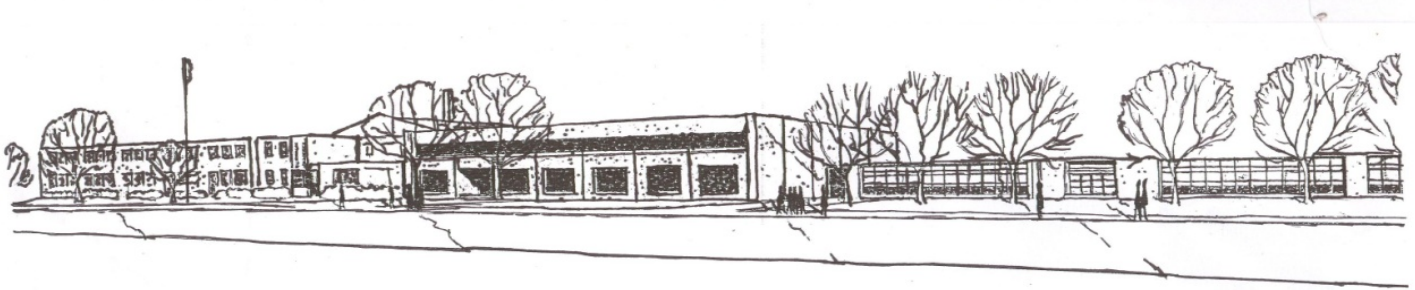


PAWNEE

CUSD #11



7th - 12th

Student Course Planning

Book

2021-2022

USING YOUR COURSE PLANNING BOOK

This handbook has been prepared to acquaint you and your parents with the educational programs offered at Pawnee High School. It contains complete information about requirements for graduation, policies relative to college admission, up-to-date information about course offerings, and suggested sequence of studies.

This handbook contains descriptive statements of all courses offered. The points stressed in these statements are:

1. The nature of the subject under consideration
2. The length of the course
3. The amount of credit awarded for successful completion of the course
4. The grade level(s) offered
5. The prerequisites for the subject

After careful study of this section, you should heed the advice of your parents and counselor in order to help make an intelligent selection of subjects. Try to map out a plan for all four years (use the page in the handbook for that purpose). Although it is allowable to change your plan or program because of a change of interest, it is always good to have a plan (goal) in mind.

When developing your four-year-plan, you should keep two goals in mind: (1) develop a four year plan that will get you the very most out of your education at PHS, and (2) develop a plan that will prepare you for life-long learning after leaving PHS. Please review the information on these next few pages so you and your parents are better informed in selecting courses necessary to complete your plan wisely.

PROGRAM OF STUDY

Careful review of the list of courses on the following pages when planning your program is essential. Plan your remaining high school career each year by reviewing these course offerings. Two definitions to keep in mind as you read the course offerings and their descriptions are

- **ELECTIVE** - Courses that may be taken for the credit listed but are not required for graduation.
- **REQUIRED** - Courses required by either the State of Illinois or the Pawnee Board of Education that **MUST** be successfully completed (passed) **BEFORE** graduation.

GRADUATION REQUIREMENTS

4 years of English
2 years of science
1 semester of health
3 years of mathematics
(Must include one credit each in Algebra & Geometry)
1 year of American History
1 year Social Studies Elective
1 semester of Constitution
1 semester of Consumer Education
1 year of Computer Science (Class of 2025)
2 years of Foreign Language (Class or 2025)
4 years of physical education
Pass the U.S. and Illinois Constitution test and flag test
Total number of credits to graduate — 28
Total number of credits earned from required courses = $19 \frac{1}{2}$
Total number of credits earned from elective courses = $8 \frac{1}{2}$

EXPLANATION OF CREDITS AND COURSE REQUIREMENTS

The topic of "credits" is often confusing to students entering high school. Basically, you earn one-half ($\frac{1}{2}$) credit for each academic course you pass (A, B, C, or D) each semester. Any course that is failed (F) results in zero "0" credit. In four years, a minimum of 28 credits have to be earned. All required subjects must be passed to be eligible for graduation.

When you enter PHS as a freshman, you have "0" credits. By the end of the second semester of your freshman year, you must have accumulated at least seven (7) credits to be classified as a sophomore; at least fifteen (15) credits by the end of your sophomore year to be classified as a junior; and twenty-two (22) by the end of your junior year to be classified as a senior. You must earn twenty-eight (28) by the end of your senior year to graduate. (This information is noted below under the heading "Credits for Class Membership"). Although these are the minimum credits needed to advance in class standing, students should always keep in mind that they must earn a minimum of $7 \frac{1}{2}$ credits per year ($7 \frac{1}{2} \times 4=30$) to stay on track for graduation with their respective class.

In each year of high school, certain courses are required. This means you must not only take these courses but you pass them in order to receive credit. If you fail (receive a grade of "F" for the final semester grade) in a required course, you must retake that course and receive a passing grade before graduation. To compound the problem; some required courses are prerequisites for other courses.

CREDITS FOR CLASS MEMBERSHIP

FRESHMAN: to be classified as a freshman, you must have graduated from 8th grade.

SOPHOMORE: to be classified as a sophomore, you must have attended at least two semesters of high school and earned a minimum of 7 academic credits.

JUNIOR: to be classified as a junior, you must have attended at least 4 semesters of high school and earned a minimum of 15 academic credits.

SENIOR: to be classified as a senior, you must have attended at least six semesters of high school and earned 22 academic credits.

To graduate, you must have earned a minimum of 30 credits and met all requirements set by the Pawnee Board of Education and the State of Illinois.

PREREQUISITES ARE IMPORTANT

Learning in second-semester (year) courses is based upon material covered in a first semester (year) class. Therefore, in studying the course descriptions, care must be taken to ensure that the student has met the necessary prerequisites to enroll in a given course.

FAILING A SUBJECT

Failing a subject can cause many problems, especially if the course is required by the school board or the State of Illinois for graduation. Also, a student must be continually aware of the total number of credits he/she has passed, and the number of courses (credits) he/she must pass to graduate on time with all requirements met. All students **MUST ENROLL IN EIGHT (8) ACADEMIC** classes in order to be listed as a full-time student. Any number fewer than Eight (8) credits can only be arranged through the offices of the principal and counseling department. Part-time student status is not available except in the following situations:

- prior agreement with local law enforcement officials
- special education students where dictated by individual circumstances
- students who have completed 8 semesters of high school

CAPITAL AREA CAREER CENTER

High school junior and senior students may be allowed to take classes at the Capital Area Career Center (CACC) in Springfield. **The cost for 2021-2022 is \$1,704.88 per semester and \$3,409.75 per year. Each semester tuition payment is due to Pawnee CUSD #11 by the first day of the student's semester attendance at CACC. If tuition is not paid to Pawnee CUSD #11, the student will be pulled from CACC and placed into courses at Pawnee CUSD #11.**

Transportation is solely the responsibility of the parent and/or student. Pawnee students may attend CACC classes each day for half a day and will receive two credits each semester for successful completion of a CACC course. All PHS graduation requirements still must be met. Students are not allowed to enroll at CACC if they are not on track to graduate.

CACC students acquire knowledge and skills that are needed to move on to college and to enter the workforce by being taught by instructors that are experts in their fields in an environment that is safe and on the cutting edge of technology. Students have a wide variety of programs to choose from at CACC where all of the programs will provide them with knowledge and opportunities that reach far beyond high school. In fact, CACC programs offer college credits and professional certification opportunities.

CACC course offering;

- Auto & Industrial Tech
 - Ag & Industrial Technology
 - Auto Tech & Servicing
 - Collision Repair

- Business & Communication Technology
 - Radio/TV/Multimedia
 - Graphic Arts
 - Photography
 - Cisco Networking Academy
 - Communication Technology

- Construction Trades
 - Electrical/HVAC
 - Welding

- Health & Human Services
 - Cosmetology
 - Culinary Arts
 - Early Childhood & Education
 - Emergency Medical Services
 - Health Occupations
 - Law Enforcement
 - Fire Science

LINCOLN LAND COMMUNITY COLLEGE

Junior and seniors are allowed to take courses at Lincoln Land Community College in Springfield or Taylorville with the approval of the high school principal. Typically, classes are held Monday through Friday. Different classes will be offered each semester in the areas of an Associate's degree in Science or Arts and Computer Administration. Students earn both college credit and high school credit.

The cost for tuition and transportation is solely the responsibility of the parent and/or student. Pawnee students may attend LLCC courses each day for half a day and will receive credits each semester based on the credit hours for each course they successfully complete, up to a maximum four credits a semester. For example; 1 credit for a two hour class, 1 ½ for a three hour class, and 2 credits for a four hour class. All PHS graduation requirements must be met. Students are not allowed to enroll at LLCC if they are not on track to graduate. All course work must be approved by the high school administration.

Examples of Courses:

Transfer Courses; Courses designed to transfer to colleges or universities after high school graduation are offered. Courses meet IAI (Illinois Articulation Initiative) guidelines. Here is a sampling of courses offered: General Biology, Fundamentals of Speaking, Intro to Criminal Justice System, Criminology, Intro to Human Services, Fundamentals of Investigation, Intro to Corrections, Intro to Forensic Science, Composition I and II, Intro to Literature—Novel, Intro to Film as Literature, History of

Western Civilization, Intro to Humanities, College Algebra, Statistics, Intro to American Politics, Intro to Psychology, Intro to Sociology.

Occupational Courses

Courses are designed for students who have career goals and want to get started on a particular career path while earning college credit. Here is a sampling of courses offered: Basic Nurse Assistant, Basic Shielded Metal Arc Welding, Advanced Metal Arc Welding, MIG Welding, TIG Welding.

DUAL CREDIT

Juniors and Seniors, who meet the criteria, may take some English and Math classes at PHS for Dual Credit granted through LLCC. These are college-level courses taught by our certified instructors on our Pawnee campus. Students will receive both college credit as well as PHS credit for these courses. These college credits are FREE for our students. NOTE: Because these are actual college classes, failing or withdrawing from a Dual Credit course could potentially impact a student's future federal financial aid eligibility.

S.T.E.P. PROGRAM

Juniors and Seniors who are eligible for Special Education Services, can enroll in the S.T.E.P. Work Program as an elective course. Students and parents must understand that many jobs and vocations are subject to restrictions by the U.S. Department of Labor, Illinois State Board of Education, Illinois Department of Vocational Education, and Department of Human Services and are not eligible for the S.T.E.P. Work Program. All S.T.E.P. work job sites must be inspected and approved by the S.T.E.P. coordinator and representative of the Department of Human Services. Work sites will be given to students whose grades; attendance, behavior, interests, and schedule permit them to participate in the S.T.E.P. work program. Students can earn up to two credits each semester for successful completion.

COMMENCEMENT (GRADUATION) EXERCISE

Graduation can be an area of confusion for some students and their parents, especially since students' order graduation announcements and gowns many weeks prior to graduation. REMEMBER, final grades are not always known for all students until after exams (sometimes as close as one day away from graduation!); therefore, students and parents must stay aware of the student's performance right up to the completion of their last exam! No student will be allowed to participate in commencement exercises unless ALL requirements have been met. Students will not be given a "certificate of attendance" in lieu of a diploma, nor will any student be allowed to go through the graduation "ceremony", receive a "blank" diploma and then complete their graduation requirements at a later date.

ACADEMIC COUNSELOR AT PAWNEE HIGH SCHOOL

The main role of the Academic Counselor is to help each student to achieve understanding of self and environment and to assist each student in the development of decision-making abilities. In order for this help to be utilized by the student, he/she can be introduced to the services in several ways.

- **OPEN DOOR POLICY:** Students may walk in at any time. If the counselor is busy at that time, please make an appointment to return at a later date.
- **TEACHER REFERRAL:** Teachers may suggest that students seek help, advice or information.
- **PARENT SUGGESTION:** At times parents feel the need to have students speak with their counselor.
- **ADMINISTRATIVE INTERVENTION:** Sometimes the principal may feel students could use the help or direction and may refer them to the Academic Counselor.

The Academic Counselor will also assist students in course selections, career planning, scholarship information and post-high school transitions. Students need to get to know the counselor early in their high school career. They should work with the counselor regularly to develop and maintain an educational and career pathway that best suits their abilities and goals.

FIVE-YEAR PLANNING GUIDE

High school students face many career choices in our society. Many of these choices require further education beyond high school. This education can come in the form of college, technical schools or even the military. This guide was developed to help those students wishing to further their education. This guide is an attempt to help parents and students through this difficult process. While we tried to anticipate most situations, this guide in no way can answer all the individualized questions that many families encounter. Parents and students should use this guide as a supplement to information received from the counselor in the Pawnee High School Office of Student Services, college admission counselors representing their respective schools or even military recruiters.

A FEW ISSUES TO CONSIDER

Is college for you? Hopefully, you have already made that decision. Assuming it is, another question that should be asked is "Will you be ready to go to college?" Issues like academics, finances, and maturity need to be considered. These issues can be a big influence on what college you may choose to attend. Take them all into consideration. Going to college and what college to attend is a decision in which the whole family should participate.

WHAT YOU SHOULD BE DOING AND WHEN

In this section we will outline what parents and students should be thinking about and doing during their 4 years of high school and their first year of post-high school education.

GRADE 9

Fall and Winter

- Meet school requirements. You should be passing not just your required classes, but all your courses. Keep your grades as high as possible, as this will pay off later.
- Make an appointment to see your counselor to discuss your post high school plans and outline a plan for what courses would be best to take at

PHS.

- Think about becoming involved in extra-curricular activities. Many scholarships later in your high school career take this involvement very seriously. This is true especially during the junior year.
- Access the Career Information Site Program or Career Cruising program from the internet in the Office of Student Services, or the computer lab. This program will help you make decisions and provide you with information you need to plan ahead. User name and password are available by talking to the counselor.
- Access <https://studentportal.isac.org> to explore post high school plans.

Spring

- Investigate employment trends. Remember, you do not have to decide on a career, but you should start thinking about what you want to do.
- Start thinking about these 5 possibilities:
 - 4 year college or university
 - 2 year Associate Degree program
 - Work apprenticeship programs
 - Vocational or Technical schools
 - Military

GRADE 10

Fall and Winter

- Complete any steps you failed to complete in grade 9.
- Start spending time researching various colleges. There is information available in the form of printed material in the Office of Student Services. Explore college websites and utilize www.collegegreenlight.com to compare schools and see if your profile is a fit for the college.

Spring

- Re-examine the courses you have planned to take your final 2 years at PHS. Discuss this plan with your counselor and make any changes that are necessary.
- Consider taking classes at LLCC or CACC to earn college credit prior to high school graduation. Also discuss with your parents if you want to take CP English III for dual credit if eligible.
- Review basic requirements for college admission with your counselor. Discuss these requirements with your parents.
- Pawnee will administer the PSAT in April.
- Consider taking the ACT test prior to your junior year. You can register to take the test online at www.actstudent.org.

GRADE 11

Fall and Winter

- Even though most scholarships are intended for seniors, check out the few that are available to juniors.
- Talk with the Office of Student Services and parents about your college plans.
- Pawnee will administer the PSAT in the fall. Put your PSAT results in

- KHAN academy to get individualized practice for future testing.
- Start thinking about what you are looking for in a college. Take the following into consideration enrollment, location, programs offered, security, admission requirements, and cost.
 - Make sure you have a social security number. It would be a good idea to memorize it.
 - Visit with college reps when they visit PHS. Prepare a list of questions about that particular school. Make final decisions about what classes to take as a senior.
 - Pawnee will administer the junior year PSAT in the fall and State-mandated SAT test in the Spring.
 - The PSAT is the qualifying test for the National Merit Scholars program. Depending on your score, many scholarship opportunities can be available when you take the PSAT.
 - Sign up to take the ACT in the Spring at www.actstudent.org. You can take the ACT as many times as you want and colleges only take your best scores. Registration opens at least a month prior to the testing date.

Spring

- Begin keeping any information you have acquired from different schools. Create a folder for each school. Keep all information.
- Continue to visit with college reps and acquire information on colleges.
- Begin narrowing your list of possible colleges.
- Plan for any college visit you might want to take during the summer. When visiting, make sure you talk to a person in the admissions office, housing office and financial aid office.
- Pawnee administers the SAT in April.

Summer

- Decide if you want to try to raise your testing scores. If so, focus on either the SAT or ACT test. Take a test prep course. See the Director of Student Services for recommendations.
- Sign up for the ACT test or SAT to retest.
- Arrange to shadow a professional in the field you are considering.

GRADE 12

Fall and Winter

- Consider taking the ACT or SAT again if you have only taken it one time. It is recommended to take the ACT at least twice. Colleges take only your best score. Register online at www.actstudent.org or www.collegeboard.org. Registration deadlines are at least a month prior to the test date.
- Visit the Office of Student Services several times a week to check on the availability of scholarships. Scholarships are posted on the bulletin board and on the Pawnee Schools website under Guidance.

- Make an appointment and talk to your counselor about your college and scholarship plans.
- Decide whom you are going to ask for recommendations for admissions and scholarship applications. Talk to these people ahead of time to check out how much time they would like to have to write the recommendations. Planning ahead helps prevent problems.
- Send off scholarship applications. Keep copies and make sure all required information accompanies all applications. Follow directions exactly, and always type the applications unless instructed otherwise.
- Have your parents talk to their employers about possible scholarships. Many corporations offer scholarships to employee's dependents.
- Get applications for the colleges on your list. Applications can be downloaded from the Internet web page of that particular school. Most applications are completed online. If you need assistance with this, make sure you see the Office of Student Services. Make sure you get housing information as well as financial aid information from each school.
- Send off any early applications after carefully checking them and keeping copies. Keep copies of everything. Make sure transcripts, recommendations, or any other relevant information is sent as well.
- If you took a dual credit class, you must contact that college and ask that your transcript be sent. There is usually a fee for each transcript sent.
- You may qualify for an application fee waiver if you also qualify for free or reduced lunches at school. Check with the counselor for more information.
- Apply to your top choices early. Most colleges and universities give scholarships based solely on your ACT or SAT scores, but money does run out!
- Many colleges and universities have scholarship deadlines of either November or December 1. Make sure you know the deadlines and apply early.
- Encourage parents to mail off tax returns as early as possible for financial aid reasons.
- Attend the FAFSA Workshop in the fall hosted by the Office of Student Services.
- Beginning in 2020, FAFSA completion will be mandatory.
- Prepare FAFSA to be sent off as soon after October 1 as possible. Make sure all information on FAFSA is correct. Keep copies. You can use your previous year tax information while waiting to file our current taxes. You may then update your FAFSA once your taxes are completed. Competing FAFSA early saves your spot in line for Illinois Grant money which runs out by early March.
- Narrow choice of schools down to fewer than 4. If you have not made a visit to any of these schools, do so. Students are allowed 3 college visits their senior year. Check with schools for a list of open houses, which are usually offered on our days off.

Spring

- Review college acceptances and financial offers you have received.
- Talk over your choices with your parents.
- Make a decision based on what is best for you and your family.
- Notify the school that you have chosen. Make sure you send in any deposits that may be needed. Many times housing requires a deposit.
- Continue to send off scholarship applications. Some are awarded late in the school year or after graduation.
- Maintain good grades. Colleges can and do cancel admission rights to students who do not continue with good grades after admittance.
- Arrange to have a final transcript sent off to the college(s) of your choice.
- Notify the schools that you have decided not to attend of your decision.

NCAA Academic Eligibility Requirements

The NCAA has criteria for students enrolling in a Division I or II college on or after August 1, 2013 and want to participate in athletics or receive an athletic scholarship. If you want to participate during your first year of college at a Division I school, you must:

- Graduate from High School
- Complete 16 Core Courses for a Division I school including:
4 years of English, 3 years of Math (Algebra or higher), 2 years of natural or physical science (including one year of lab science if offered by your school), 1 additional year of English, math or natural science, 2 years' social science, 4 extra years of Core Courses (from any category above, or foreign language, comparative religion or philosophy).
- Earn a minimum required grade point average of 2.300 in your core courses
- Earn a combined SAT or ACT sum score that matches your core course grade point average and test score sliding scale (for the complete scale, log see the Director of Student Services.

Students enrolling in a Division II school on or after August 1 and want to participate in athletics or receive an athletic scholarship during their first year must:

- Graduate from High School
- Complete 14 Core Courses including:
3 years of English, 2 years of math (Algebra or higher), 2 years natural or physical science (including one year of lab science if offered by your school), 3 additional years of English, math, or natural or physical science, 2 years' social science, 4 years of additional core courses (from any category above, or foreign language, comparative religion or philosophy)
- Earn a 2.20 grade point average or better in your core courses for full qualifier.
- Earn a combined SAT score or an ACT score that matches G.P.A. and test score sliding scare.

A core course must:

- Be an academic course in one or a combination of these areas: English, math, natural/physical science, social science, foreign language, comparative religion or philosophy.
- Be a four-year college preparatory class.
- Be taught at or above your high school's regular academic level (no remedial courses or those taught at a slower pace or that cover less content.)

Check PHS's list of NCAA courses located on the resource page of the NCAA Eligibility Center website at www.eligibilitycenter.org or ask the Office of Student Services. Prospective student-athletes must also register with the Eligibility Center as soon as the beginning of their junior year in high school. You can register online at www.eligibilitycenter.org. There is a \$90 fee for registering. The fee may be waived for student-athletes who have received a fee waiver for the ACT or SAT. Contact the Office of Student Services for more information on registration or waivers.

NAIA Academic Eligibility Requirements

A prospective student-athlete that is interested in playing sports at a NAIA school for the first time must register online at www.playnaia.org. There is a \$90 fee to register with the NAIA. There are waivers available to those who received a waiver for the SAT or ACT. See the Office of Student Services for more information. Any incoming freshman that wants to participate in athletics at a NAIA school must:

- Graduate high school
- Meet two of the three following requirements. If you do not meet at least two as a freshman, you cannot participate for the first full year of attendance.
 - Achieve a minimum of an 18 on the ACT or an 860 on the SAT.
 - Achieve a minimum overall high school grade point average of 2.0 on a 4.0 scale.
 - Graduate in the top half of your class.

POST HIGH SCHOOL

Many items will be different when planning your first year of education after you graduate from high school. Listed below are some issues to take care of after high school graduation but before actual start of your new school.

- Check out any orientation sessions that might be held during the summer for incoming students.
- Make sure your living arrangements are set. Many schools allow first year students to live with a specific roommate. If you have someone with whom you want to room with, check it out with the school to see if that is possible. Another consideration is the type of living arrangements. Some schools offer living arrangements that emphasize studying, athletics, or even specific areas of study.
- Make sure you meet all the fee deadlines. You can lose any prior arrangements with the school if payment is not made on time.
- Make sure you have whatever clothing is required for the upcoming school

year. Many students find that they have to do much more walking when they are away at school. Consider the climate, where you will be living in relation to your classrooms, and basic layout of the campus.

- Plan ahead for your personal items you may want to take. Items like fans, pictures, electronic equipment or even musical instruments need to be considered.
- If you are going to be eating on campus, meal plans may need to be considered. Some schools offer a variety of meal plans based on the number of meals per week. Find the one that is right for you.
- Several other considerations should be laundry, cell phones and a budget for spending money (checking accounts and credit cards).
- During the first year of post high school education, keep in mind the following points:
 - Most schools have minimum academic standards. These standards must be met to continue attending the school. Generally speaking, most schools are not very flexible when it comes to maintaining their academic standards.
 - Keep in contact with your academic advisor. If you are having trouble, seek help immediately. Post high school education can be very fast paced. It is easy, to get behind in your academics and can very difficult to catch up. It is much easier to keep up.
 - Keep in contact with your instructors. Let them know who you are. Let them know that you care about your grades and you care about their class. This can be a big advantage in larger schools.
 - Keep in contact with the Financial Aid Office at your school. If you are receiving any kind of financial aid, you will have to go through the same process of getting aid for your second year as you did for your first year. This means filling out the forms, finding out if any scholarships you might have had are renewable and in general, repeating the whole process. Your school financial aid office will be happy to assist you in this process.
- At some point you should discuss with your academic advisor what you should take your second year. Find out what is going to be offered and for what you should register.
- Make sure you are also meeting the academic requirements of any scholarships you have received. Some scholarships are renewable only if you are maintaining a certain grade point average.
- If you won a scholarship from the Pawnee Education Foundation, or Pawnee PTO, remember to submit your first semester transcript to the Office of Student Services by at the completion of your first semester at college.

THE SELECTION PROCESS

Students and parents have many options in selecting a college. A simple question should be asked. What are we looking for in a college? Some of your options may include the following:

- Size - College enrollment ranges from several hundred students to over 50,000.
- Programs – College programs can run from 2 to 5 years in length.
- Private or Public - Some schools are supported by the state, and some are privately supported. Many of the private schools are smaller and may be church affiliated. There are many more private schools than public.
- Location - Many schools of various sizes are located near Pawnee. This is totally a matter of personal preference.
- Security - This is a factor that everyone should note. Talk to the college admission people about trouble that may have happened on campus.
- Special Programs -Some students are looking for special or specific programs. Make sure the school you are considering offers these programs.

Taking these factors into consideration will give your family a start in the selection process. This process differs for each student and family. Make up your own list.

HELPFUL RESOURCES

Many helpful resources are available to parents and students. Your most important resource is the counselor at PHS.

Listed below are some electronic resources available to parent and students:

- www.careerprofiles.info
- www.act.org The website of the ACT organization includes test registration and preparation.
- www.isac.org This is the website of the Illinois Student Assistance Commission (ISAC). The website has everything you need to know when it comes to career and college planning. You can explore careers based on your interests, explore post-secondary colleges and universities and search for scholarships. The site allows you to search for schools based on your program or major interests and also to apply online to participating schools. You can also find financial aid presentations and calculators.
- <http://www.collegeboard.com/student> The website of the College Board offers a wide variety of information, including test preparation for the SAT and information about careers and financial aid.
- www.collegeillinois.org This is information for the Illinois 529 prepaid tuition plan.
- <https://studentaid.ed.gov> This site is the FASFA site for seniors who want to apply for federal and state financial aid online. It also has a lot of great information on preparing for college, types of financial, and loan repayment.
- www.campustours.com Links to virtual campus tours and videos at hundreds of campuses.
- www.collegegreenlight.com Here you can compare colleges, find scholarships, view admission scatter grams based on your testing scores, G.P.A., and grades.

FOUR YEAR EDUCATIONAL PLAN FORM

Name (Last) (First) (M.I.)

CAREER GOAL

| <i>FRESHMEN FIRST SEMESTER</i> | CREDIT | <i>SECOND SEMESTER</i> | CREDIT |
|--------------------------------|--------|------------------------|--------|
| English: | | English: | |
| Math: | | Math: | |
| Science: | | Science: | |
| PE: | | PE: | |
| Health: | | Drivers Education: | |
| Elective: | | Elective: | |
| Elective: | | Elective: | |
| Elective: | | Elective: | |

CREDITS: SEMESTER TOTAL

| <i>SOPHOMORE FIRST SEMESTER</i> | CREDIT | <i>SECOND SEMESTER</i> | CREDIT |
|---------------------------------|--------|------------------------|--------|
| English: | | English: | |
| Math: | | Math: | |
| Science: | | Science: | |
| PE: | | PE: | |
| American History: | | American History: | |
| Speech/Composition: | | Speech/Composition: | |
| Elective: | | Elective: | |
| Elective: | | Elective: | |

CREDITS: SEMESTER TOTAL

| <i>JUNIOR FIRST SEMESTER</i> | CREDIT | <i>SECOND SEMESTER</i> | CREDIT |
|------------------------------|--------|------------------------|--------|
| English : | | English: | |
| Math: | | Math: | |
| PE: | | PE: | |
| Elective | | Elective: | |
| Elective: | | Elective: | |
| Elective: | | Elective: | |
| Elective: | | Elective: | |
| Elective: | | Elective: | |

CREDITS: SEMESTER TOTAL

| <i>SENIOR FIRST SEMESTER</i> | CREDIT | <i>SECOND SEMESTER</i> | CREDIT |
|------------------------------|--------|------------------------|--------|
| Constitution: | | Consumer Education: | |
| PE: | | PE: | |
| Elective: | | Elective: | |
| Elective: | | Elective: | |
| Elective: | | Elective: | |
| Elective: | | Elective: | |
| Elective: | | Elective: | |
| Elective: | | Elective: | |

CREDITS: SEMESTER TOTAL

AGRICULTURAL DEPARTMENT

| | 7 th Grade | 8 th Grade | Freshman | Sophomore | Junior | Senior |
|---|--------------------------|--------------------------|-----------------------------------|---|---|--------|
| Accelerated 4 Year College Bound | | | Introduction to Agriculture | Agricultural Science *Greenhouse and Floral Design *Landscaping and Turf Management | Veterinary Technology Ag Business Management | |
| 2-4 Year College Bound | | | Introduction to Agriculture | Agricultural Science *Greenhouse and Floral Design *Landscaping and Turf Management | Veterinary Technology Ag Business Management | |
| 2 Year Technical | | | Introduction to Agriculture | Agricultural Science *Greenhouse and Floral Design *Landscaping and Turf Management | Veterinary Technology Ag Business Management | |

*-denotes semester course

Course Descriptions

Introduction to Agriculture

Grade Levels 9-12

Course #18001A001

CTE Course

This orientation course provides an opportunity for students to learn how the agricultural industry is organized; its major components; the economic influence of agriculture at state, national and international levels; and the scope and types of job opportunities in the agricultural field. Basic concepts in animal science, plant science, soil science, horticulture, natural resources, and agribusiness management will be presented. Participation in FFA student organization activities and Supervised Agricultural Experience (SAE) projects is an integral course component for leadership development, career exploration, and reinforcement of academic concepts. This course is the prerequisite for all agricultural courses.

Agricultural Science

Grade Levels 10-12

Course #18003A001

CTE Course

This course will develop students' understanding of the major agronomic crops in the United States. Major units of instruction include scientific research, soil erosion, soil fertility, plant anatomy and physiology, plant propagation, plant growth, integrated pest management, and growing agronomic crops. Participation in FFA student organization activities and Supervised Agricultural Experience (SAE) projects is an integral course component for leadership development, career exploration, and reinforcement of academic concepts.

Greenhouse Production and Floral Design (Semester Course) Grade Levels 10-12
Course #18053A001 CTE Course

This course focuses on the greenhouse management, floral design, and related segments of the horticulture industry. Major units of study include floriculture plant identification, greenhouse structures, and the growing of greenhouse crops. Also included are care and handling of cut flowers, principles of art applied to floral design, and the mechanics of floral design. Agribusiness units will be introduced in merchandising, advertising, sales, and operating a retail floral business. Participation in FFA student organization activities and Supervised Agricultural Experience (SAE) projects are an integral course component for leadership development, career exploration, and reinforcement of academic concepts.

Landscaping & Turf Management (Semester Course) Grade Levels 10-12
Course #18054A001 CTE Course

This advanced course focuses on the landscape, nursery, and turf segments of the horticulture industry. Units of student instruction include: identifying landscape plants, designing landscape plans, landscape construction techniques, and installing landscape plants. Also included are nursery production, turf grass production, and maintenance of existing landscapes. Agribusiness units will cover calculating prices for work, managing a horticulture business, advertising, and sales. Participation in FFA student organization activities and Supervised Agricultural Experience (SAE) projects is an integral course component for leadership development, career exploration and reinforcement of academic concepts.

Ag Business Management Grade Levels 11-12
Course #18201A001 CTE Course

This course will develop students' understanding of the agricultural industry in the United States and World. Instructional units include: starting and operating a business, customer relations, agricultural finance, marketing and trading of agricultural products, international agriculture, agricultural law, taxes, and agricultural economics. Employability skills will be developed through resume writing and interviewing techniques. Participation in FFA student organization activities and Supervised Agricultural Experience (SAE) projects is an integral course component for leadership development, career exploration and reinforcement of academic concepts.

Veterinary Technology Grade Levels 11-12
Course #18105A001 CTE Course

This course will develop students' understanding of animal care. Units of study will include animal anatomy and physiology, animal digestion, animal reproduction, animal health, livestock and large animal production, and companion and small animal care. Participation in FFA student organization activities and Supervised Agricultural Experience (SAE) projects is an integral course component for leadership development, career exploration, and reinforcement of academic concepts.

BUSINESS/TECHNOLOGY DEPARTMENT

| | 7 th Grade | 8 th Grade | Freshman | Sophomore | Junior | Senior |
|---|--------------------------|--------------------------|------------------|--|--|--|
| Accelerated 4 Year College Bound | | Computers 8 | Computer Tech | Web Page Design I | *Accounting *Marketing Web Page Design II | **Consumer Ed Web Page Design III |
| 2-4 Year College Bound | | Computers 8 | Computer Tech | *Business Technology *Business Office Procedures | Web Page Design I *Accounting *Marketing | **Consumer Ed Web Page Design II |
| 2 Year Technical | | Computers 8 | Computer Tech | *Business Technology *Business Office Procedures | Web Page Design I | **Consumer Ed *Web Page Design II |

#-denotes required course

*-denotes semester course

Course Descriptions

Computer Technology

Grade Levels 9-12

Course #10005A001

CTE Course

This course will include a semester of word processing and presentation software and a semester of spreadsheet/database software. Students will use technology to create projects and assignments for other classes in addition to having the opportunity to improve keyboarding skills, prepare business documents, and improve communication skills. This course is the pre-requisite for all Business/Computer classes.

Business Technology (Semester Course)

Grade Levels 10-12

Course #12001A001

CTE Course

This course provides students with information regarding the ever changing world of technology. Topics covered include computer ethics, privacy, security, internet research, and identity theft. Students will complete work on different work-based projects dealing with topics covered.

Business Office Procedures (Semester Course)

Grade Levels 10-12

Course #12002A000

This course provides students with the opportunity to become familiar with the procedures, concepts, and technologies found in the world of work. Students will complete many hands-on activities dealing with professionalism in the workforce; as well as problem based learning projects.

Web Page Design I
Course #10201A000

Grade Levels 10–12

Throughout this course, students will be evaluating websites as well as creating and designing web pages using the HTML language and FrontPage software. Students will insert images, create fonts, and create links to other Web pages.

Web Page Design II
Course #10201A001

CTE Course

Grades Levels 11-12

Pre-requisite: Successful completion of Web Page Design

Students will review the fundamental elements of web page design, develop skills in organizing information, write clearly and concisely, use colors and graphics that are effective and pleasing to the eye, and present finished Web projects to the class. Students will use advanced HTML code and HTML editing software programs to create the sites. Throughout the course, students will also be working on the school Web Site and coding for game design.

Marketing in Business (Semester Course)
Course #12055A001

CTE Course

Grade Levels 11-12

Marketing is a semester course designed to enhance the students' knowledge of the global marketing industry. The emphasis of this course will be business marketing, but we will be looking at other marketing topics such as: sports and entertainments, fashion marketing, management, and travel and tourism. A wide variety of active learning projects are included in this course.

Computerized Accounting (Semester Course)
Course #12104A001

CTE Course

Grade Levels 11-12

Students will develop a background in business and finance through accounting training. Business simulations and practical business applications are the focus of this course. Training includes theory and hands-on experience in general ledger software and spreadsheet applications. Students will be able to expand their knowledge and prepare for any career involving the accumulation and reporting of financial information.

Web Page Design III
Course #10201A002

CTE Course

Grade Level 12

Pre-requisite: Successful completion of Web Page Design I and Web Page Design II

Students will review HTML language and be introduced to new programming languages such as CSS, JavaScript and Python. This course will take a look at the history of game design as well as the progression of game design. Students will also use advanced coding language to create basic games to multi-level games with sound.

Consumer Education (Semester Course)
Course #22210A000

Required for Grade Level 12

This course will help prepare students for living on their own. Students will learn about financial responsibilities and will be assisted in being prepared for the choices ahead. Topics include: budgeting, banking, saving, investing, credit, bankruptcy, career decisions, insurance, legal protection, and housing and family decisions.

ENGLISH DEPARTMENT

| | 7 th Grade | 8 th Grade | Freshman | Sophomore | Junior | Senior |
|---|---------------------------|---------------------------|---------------|--|--|----------------------------|
| Accelerated 4 Year College Bound | Grammar 7 Literature 7 | Grammar 8 Literature 8 | #CP English I | #CP English II #Speech/ Composition Mythology | CP English III (LLCC) Literature | CP English IV (LLCC) |
| 2-4 Year College Bound | Grammar 7 Literature 7 | Grammar 8 Literature 8 | #CP English I | #CP English II #Speech/ Composition Mythology | CP English III (LLCC) Literature | CP English IV (LLCC) |
| 2 Year Technical | Grammar 7 Literature 7 | Grammar 8 Literature 8 | #English I | #English II #Speech/ Composition Mythology | Literature | |

#-denotes required course

Course Descriptions

English I

Grade Level 9

Course #01001A000

This course will build upon students' prior knowledge of grammar, vocabulary, word usage, and the mechanics of writing. Reading, writing, speaking, and listening in formal and informal situations will be incorporated. Various genres of literature will be defined with writing exercises linked to reading selections.

College Prep English I

Weighted 5.0 Grade Level 9

Course #01001A000

Pre-requisite: Successful completion of 8th grammar and literature with a C or better.

This course, the first part of a four-year sequence, will include studies in daily oral language, grammar, and literature. Reading, writing, listening, and speaking in both formal and informal situations will be incorporated. Students learn about the alternate aims and audiences of written compositions by writing persuasive, critical, and creative multi-paragraph essays and compositions. The pace of the course will be INTENSIVE in preparation for college expectations.

English II

Grade Level 10

Course #01002A000

This course, the second part of a four-year sequence, will include studies in daily oral language, grammar, and literature. Reading, writing, listening, and speaking in both formal and informal situations will be reviewed in further depth.

College Prep English II**Weighted 5.0** Grade Level 10

Course #01002A000

Pre-requisite: Successful completion of C.P. English I with a C or better or English I with a B.

This course, the second part of a four-year sequence, will include studies in daily oral language, grammar, and literature. Reading, writing, listening, and speaking in both formal and informal situations will be reviewed in further depth. The pace of this course will be INTENSIVE in preparation for college expectations.

Speech (Semester Course)

Grade Level 10

Course #01151A000

This course will include demonstration, informative, and persuasive speeches. Interviewing skills will be addressed. Impromptu and extemporaneous speeches will be presented as well.

Composition (Semester Course)

Grade Level 10

Course #01103A000

The Composition course focuses on students' writing skills and develops their ability to compose different types of papers for a range of purposes and audiences. Students will explore and practice descriptive, narrative, persuasive, and expository styles as they write paragraphs, essays, and a formal documented research paper. The focus is on nonfiction, scholarly, and formal writing.

Mythology

Grade Levels 10-12

Course # 01065A000

This course includes the study of all the great myths, explores how myths and legends have influenced language, art, music, psychology and even today's popular culture. These myths are drawn primarily from Ancient Greece and Rome.

College Prep English III (LLCC option)**Weighted 5.0** Grade Level 11-12

Course #01102A000

Pre-requisite: 2.700 minimum G.P.A.

This course is really two courses offered on the Pawnee High School campus for 6 hours of college credit through Lincoln Land Community College.

EGL 101: Composition I

The first course in a two-semester sequence of English composition, this course introduces students to academic writing as a process of developing and supporting a thesis in an organized essay. Course topics include methods of invention, development, and organization; the elements of style, including the conventions of standard written English; and an introduction to research and documentation. Students write expository and

argumentative essays based on analytical reading and critical thinking. R, 11 (3 lecture hours) IAI: C 1900

EGL 111: Introduction to the Novel

This course is an introduction to the critical study of the novel as a literary genre. It introduces students to the scholarly study of the novel, with a focus on multiple periods and genres. Theme, structure and style are emphasized.

Literature

Grade Levels 11-12

Course #01053A000

The literature course offers a condensed version of the American (1st Semester) and British (2nd Semester) Literature courses offered to college prep students at Pawnee High School. Students will have the opportunity to study a survey of literature and reflect upon the dominant themes prevalent over the course of British and American literary history. They will improve their critical-thinking skills as they determine the underlying assumptions and values within the reading selections and as they understand how the works reflect society's problems and culture. Oral discussion is an integral part of this course.

College Prep English IV (LLCC option)

Weighted 5.0 Grade Level 12

Course #01149A000

Pre-requisite: Pre-requisite: 2.700 minimum G.P.A., completion of EGL101

This course is really two courses offered on the Pawnee High School campus for 6 hours of college credit through Lincoln Land Community College. Prerequisite: completion of a prerequisite (either of the CP English III dual credit composition courses qualifies) or appropriate placement scores.

EGL 102: Composition II

This course is designed to enhance and deepen the critical skills of argumentation and academic writing introduced in EGL 101, Composition I. Students continue to write essays that demonstrate their ability to analyze and evaluate the ideas of others and integrate them into their own writing. The course reinforces student experience with the conventions of standard written English and the conventions of documentation while developing student ability to conduct research and present research findings in an ethical, accurate and critical manner.

EGL 114: Film as Literature

This course is an introduction to the critical study of film as literature in which students learn to "read," discuss, interpret and write about films with greater awareness, clarity and skill. In accord with a literary approach, films are analyzed in terms of their plot, setting, characterization, theme and point of view. Students also learn to recognize and interpret role (casting, acting, camera movement, musical score, lighting) and other basic elements of film play in their response to films. R, W2, 11 (2 lecture hours and 2 laboratory hours) IAI: HF 908

FAMILY AND CONSUMER SCIENCE DEPARTMENT

| | 7 th Grade | 8 th Grade | Freshman | Sophomore | Junior | Senior |
|---|--------------------------|-----------------------|-------------------------|--|--|--------|
| Accelerated 4 Year College Bound | | Home Ec 8 | Introduction to FACS | *Living Environments *Parenting *Life Skills | *Clothing and Textiles *Foods And Nutrition | |
| 2-4 Year College Bound | | Home Ec 8 | Introduction to FACS | *Living Environments *Parenting *Life Skills | *Clothing and Textiles *Foods And Nutrition | |
| 2 Year Technical | | Home Ec 8 | Introduction to FACS | *Living Environments *Parenting *Life Skills | *Clothing and Textiles *Foods And Nutrition | |

*-denotes semester course

Course Descriptions

Introduction to Family and Consumer Sciences Careers
Course #22201A001

Grade Levels 9-12

CTE Course

This course introduces student to the field of family and consumer sciences and the many career opportunities available in this broad field. The course includes theory and laboratory experiences in the following content areas; Nutrition and culinary arts; textiles and design; family, career, and community leadership development; resource management; human development and life-long learning; facility design, care, and management; and interpersonal relationships and life management skills.

Life Skills

Grades 10-12

Course #2206A000

Life Skills will provide students with information about a wide range of subjects to assist them in becoming wise consumers and productive adults. This course will emphasize such topics as goalsetting, decision-making, and setting priorities; money and time management; relationships; and the development of the self. Practical exercises regarding selecting and furnishing houses, meeting transportation needs, preparing food, selecting clothing, and building a wardrobe is integral to this class. In addition, specific topics such as insurance, taxation, and consumer protection will be covered.

Living Environments (Semester Course)

Grade Levels 10-12

Course #22211A001

CTE Course

This course provides basic knowledge and skills needed to select, acquire, maintain, and manage living environments that meet the needs of the occupants. The selection and care of housing and furnishings are related to factors such as social-economic conditions, individual tastes, psychological effects, aesthetic values, safety, sanitation, and energy

conservation. The course content includes the following duty areas: locating and managing housing using goal setting and decision-making skills; evaluating living space to meet basic needs; creating and maintaining living environments; ensuring health and safety; selecting appropriate resources in creating living environments; determining the impact of the individual and/or group on living environments; and applying housing and home management choices relating to changing family/individual and career patterns.

Parenting (Semester Course)

Grade Levels 10-12

Course #22204A001 CTE Course

During the semester, besides studying the book and handouts, there are speakers; walking field trips to observe pre-kindergarten, a presentation in the Media Center on children's literature, etc.; and, most years, an off-campus field trip to Lincoln Land's Child Development Center. In addition, we participate in a program sponsored by the Sangamon County Department of Public Health for students to have responsibility for a bionic baby over a weekend.

Clothing & Textiles (Semester Course)

Grade Levels 11-12

Course #19201A001 CTE Course

This course provides knowledge and understanding of textiles, fashions, and fabrics in meeting the clothing and fabric (fashion) product needs of individuals and families. The course content centers around developing competencies in the following duty areas: selecting clothing and textile products; evaluating, selecting, and caring for clothing and textiles; contributing to health, safety, and comfort; and selecting, constructing, altering, repairing, and remodeling clothing/textile products.

Foods & Nutrition (Semester Course)

Grade Levels 11-12

Course #16054A001 CTE Course

This course includes the basic classroom and laboratory experiences needed to develop a knowledge and understanding of basic food principles and nutrition for people of all ages. Course content centers around using the decision-making process; meeting basic needs by applying nutrition concepts; meeting health and safety needs in planning, preparing and serving food; maximizing resources when planning/preparing/serving food; promoting hospitality in food practices; and analyzing individual and family nutritional needs.

FINE ARTS

| | 7 th Grade | 8 th Grade | Freshman | Sophomore | Junior | Senior |
|---|--------------------------------------|-----------------------------------|--|-----------|--------|--------|
| Accelerated 4 Year College Bound | JH Art or Band or Chorus | JH Art or Band or Chorus | Art I Creative Arts Band Show Choir | | | |
| 2-4 Year College Bound | JH Art or Band or Chorus | JH Art or Band or Chorus | Art I Creative Arts Band Show Choir | | | |
| 2 Year Technical | JH Art or Band or Chorus | JH Art or Band or Chorus | Art I Creative Arts Band Show Choir | | | |

Course Descriptions

Band

Grade Levels 9-12

Course #05102A000

Members of the high school band will have the opportunity to experience a variety of musical styles through instrumental performance. They will participate in marching band, pep-band, concert band, and jazz band throughout the year. Students will be expected to perform at a number of events, for example the home varsity football/basketball games, the county tournament, and two concerts. Members will learn technique, scale study, and music theory throughout the year. The course is designed for students who have prior experience on a concert band instrument and can prove proficient at the level of the band. The band director will make this decision for new district students.

Each student is expected to participate in all performances. Performance may include football/basketball games, concerts, solo/ensemble contest, and honor band festival. Students will also gain knowledge about their instrument through practice, sight reading, scales, and performance.

Show Choir

Grade Levels 9-12

Course #05111A000

Pre-requisite: Auditions

Members of the show choir spend the majority of class working on songs and dances to be performed at the fall, winter, and spring concert as well as possible competitions. When not singing, chorus students study basic music theory and music history.

Creative Arts

Grade Levels 9-12

Course #05052A000

This class will be exploring the many different elements that are involved in acting and theater work. The students will be giving in class performances and reading from scripts. These performances will be videoed and then critiqued in class so the students can become a better performer. The student will explore the elements that they will need to know to become a better actor. The students will also be learning what is involved in set design and build when they work on the schools plays and musicals. High expectations will be expected of the students in the area of theater etiquette. We will also explore many other methods of acting and will be working out of the Stage and School text book. Performances will be done in both the classroom and auditorium.

Art I

Grade Levels 9-12

Course #05154A000

Art I is an art education program that is designed for the beginning art student. In this art education class the student will study many disciplines in the field of art. The student will look at and study the history of art and how it relates to today's contemporary world. The students will also study the elements of art and how to critique art work. This will help the student to develop a better vocabulary and help them create better compositional pieces in relationship to their personal aptitude in the fine arts. The student will be working with many types of mediums, ranging from drawing, painting, pen and ink, sculpture and photography.

FOREIGN LANGUAGE DEPARTMENT

| | 7 th Grade | 8 th Grade | Freshman | Sophomore | Junior | Senior |
|---|--------------------------|----------------------------------|------------|-------------|-------------|------------|
| Accelerated 4 Year College Bound | | 8 th grade Spanish | #Spanish I | #Spanish II | Spanish III | Spanish IV |
| 2-4 Year College Bound | | 8 th grade Spanish | #Spanish I | #Spanish II | Spanish III | |
| 2 Year Technical | | 8 th grade Spanish | #Spanish I | #Spanish II | | |

#-denotes required course (Class of 2025)

Course Descriptions

Spanish I

Grade Level 9

Course #06101A000

Spanish I is a beginning Spanish course. Students learn to speak and write, using basic conversational units. Students also learn about Spanish culture.

Spanish II

Grade Level 10

Course #06102A000

Pre-requisite:

Spanish II is the second year of Spanish. Students review and continue to learn more vocabulary and verb tenses. Culture is also stressed.

Spanish III

Weighted 5.0 Grade Level 11

Course #06103A000

Pre-requisite:

Students review and continue to learn more Spanish vocabulary and verb tenses. Culture and readings are included in this course.

Spanish IV

Weighted 5.0 Grade Level 12

Course #06104A000

Pre-requisite:

This advanced Spanish course stresses the culture of approximately 21 Hispanic countries. Some review is covered as needed. Students gain more speaking and writing practice.

MATHEMATICS DEPARTMENT

| | 7 th Grade | 8 th Grade | Freshman | Sophomore | Junior | Senior |
|---|----------------------------------|--------------------------|--------------|---|--|-----------------------------------|
| Accelerated 4 Year College Bound | Pre- Algebra | Algebra | #CP Geometry | #CP Algebra II *Math Test Prep | CP Algebra III Pre-Calculus Business Math Math IV | CP Calculus CP Statistics |
| 2-4 Year College Bound | Pre- Algebra | Algebra | #Algebra I | #CP Geometry or #Geometry *Math Test Prep | #CP Algebra II or #Algebra II Business Math Math IV | CP Algebra III Pre-Calculus |
| 2 Year Technical | 7 th grade Math | Pre- Algebra | #Algebra I | #Geometry *Math Test Prep | #Algebra II Business Math Math IV | |

#-denotes required course

*-denotes semester course

Course Descriptions

Algebra I

Course #02052A000

Grade Level 9-12

Algebra I builds on skills taught in Pre-Algebra, including equations, inequalities, and polynomials. Student will also explore systems of equations in two variables, rational expressions, and radicals.

Business Math

Course #02154A000

Grade Level 11-12

Business Mathematics Business Math courses reinforce general math skills, emphasize speed and accuracy in computations, and use these skills in a variety of business applications. Business Math courses reinforce general math topics (e.g., arithmetic, measurement, statistics, ratio and proportion, exponents, formulas, and simple equations) by applying these skills to business problems and situations; applications might include wages, hourly rates, payroll deductions, sales, receipts, accounts payable and receivable, financial reports, discounts, and interest.

College Prep Geometry

Weighted 5.0 Grade Levels 9-12

Course #02072A000

Pre-requisite: Successful completion of 8th grade Algebra or Algebra I with a C or better.

CP Geometry is a required math course for the college bound student after the completion of Algebra I or CP Algebra I. CP Geometry is the study of the concepts of plane geometry,

parallel lines, proof of congruent triangles and similar triangles, quadrilaterals, and the study of circles, and right triangles.

College Prep Algebra II
Course #02056A000

Weighted 5.0 Grade Levels 10-12

Pre-requisite: Successful completion of CP Geometry or successful completion of Algebra I and Geometry with a C or better class average.

CP Algebra II is a required math course for the college bound student after the completion of CP Geometry or Algebra I. Students taking this course have the option of continuing with Pre-Calculus their Junior or Senior year. Topics include: linear, quadratic, polynomial, exponential, and other functions, complex numbers, advanced factoring techniques, matrices and conic sections.

Geometry

Grade Levels 10-12

Course #02071A000

Geometry is required after the completion of Algebra II or CP Algebra II. This course is the basic study of plane geometry, which includes segment measure, parallel lines, triangles, quadrilaterals, circles, and polygons.

Math Test Prep (Semester Course)

Grade Level 10-12

Course #02993A000
01203A000

Math III is a SAT/ACT test preparation course. This course is designed to help students with test taking skills. The topics will include content that is expected for students to know on the PSAT, PSAT, SAT, and ACT tests. The material will range from topics in Algebra I, Algebra II, Geometry, and Trigonometry. This course will also incorporate strategies to help answer word problems and the reading sections of the English portion of standardized tests. This course is designed for 2-4 Year College Bound Seniors.

Algebra II

Grade Level 11

Course #02053A000

Algebra II is a mid-level math course. This course stresses an understanding not only of basic algebraic principles and techniques, but also of how to model and solve real-world problems. Students will study the writing, graphing, and solving of linear equations and inequalities, both individually and in systems; the basics of quadratic and polynomial functions and their graphs.

College Prep Algebra III (LLCC Dual Credit) Weighted 5.0

Grade Level 11-12

Course #02057A000

Pre-requisites: 3.200 minimum G.P.A. or 2.900 minimum G.P.A. with a C or better in Pre-Calculus

This course centers on the exploration of various algebraic functions, including polynomial, rational, exponential and logarithmic functions. The properties, graphs and

inequalities of these functions are analyzed and applications of their use are studied. Other topics include systems of equations, matrices, conic sections, sequences and series.

Math IV (Lincoln Land)

Grade Level 11-12

Course #02994A000

Pre-requisites: Successful completion of any two math courses.

Math IV is a transitional mathematics course. A student, who successfully completes this course with completion of three previous math courses, will earn transitional credit to a cooperating 2-4-year community colleges/universities and eliminates the option of placement testing. A student with successful completion of two years of previous math courses will earn high school credit and techniques that will help prepare them for placement testing.

The topics will include conceptual and procedural tools that build a numerical base and establish algebraic thinking, numeracy, arithmetic operations of whole numbers, integers, fractions, decimals, and percent, magnitude, scientific notation, estimation, measurements, measures of central tendency, line graphs, bar graphs, charts, proportional reasoning and relationships, applying quantitative reasoning strategies to solve real-world problems, solve applications, inequalities, functions, end behavior of functions, order of operations, the Pythagorean Theorem, perimeter, area, and volume, rate of change and slope, systems of equations and inequalities, liner functions, linear applications, interpreting linear graphs, solving linear equations, factoring, polynomial operations, and polynomial division.

Pre-Calculus

Weighted 5.0 Grade Levels 11-12

Course #02110A000

Pre-requisite: Successful completion of CP Geometry and CP Algebra II with a B or better.

Pre-Calculus is an elective, upper level math course for the college bound student. This course will include topics found in College Algebra: quadratic, polynomial, rational, and other functions. Specific attention is given to the nature of functions in general. This course will also be an in-depth study of topics found in Trigonometry, trigonometric functions, and applications.

College Prep Statistics (LLCC Dual Credit)

Weighted 5.0 Grade Levels 12

Course #02201A000

Pre-requisite: 3.00 minimum G.P.A. or 2.300 minimum G.P.A. with a C or better in CP Algebra II.

This introductory course in statistics focuses on statistical reasoning and its use in solving real-world problems and in interpreting results reported in journals and through popular media. The content includes the following: basic descriptive statistics; basic probability theory; random variables and probability distributions; sampling distributions for statistics; statistical inferences involving confidence interval estimation and hypotheses testing for means, standard deviations and proportions; correlation and regression; and ANOVA.

Successful completion of this course will give the student college credit at Lincoln Land Community College that could transfer to other 2-4 year colleges.

College Prep Calculus (LLCC Dual Credit)

Weighted 5.0 Grade Level 12

Course #02121A000

Pre-requisite: Pre-Calculus; for Dual Credit Option = ALEKS test score of 76 or better or ACT Math score of 25 or better or SAT Math score of 600 or better.

The mathematical limit is defined intuitively and rigorously. Limits are evaluated. The derivative is defined, derivatives are determined and applications are studied. The definite integral is defined, anti-derivatives are determined and applications are studied. These topics are then integrated with their applications. Successful completion of this course will give the student college credit at Lincoln Land Community College that could transfer to other 2-4 year colleges.

PHYSICAL EDUCATION, HEALTH, & DRIVER EDUCATION DEPARTMENT

| | 7 th Grade | 8 th Grade | Freshman | Sophomore | Junior | Senior |
|---|--------------------------|--------------------------|---------------------------------------|-----------|--------|--------|
| Accelerated 4 Year College Bound | P.E. | P.E. | #P.E. #Health/Drivers Education | #P.E. | #P.E. | #P.E. |
| 2-4 Year College Bound | P.E. | P.E. | #P.E. #Health/Drivers Education | #P.E. | #P.E. | #P.E. |
| 2 Year Technical | P.E. | P.E. | #P.E. #Health/Drivers Education | #P.E. | #P.E. | #P.E. |

#-denotes required course

Course Descriptions

Driver Education (Semester Course)

Grade Level 9

Course #08151A000

Pre-requisite: Must pass eight (8) semester courses over the previous two (2) semesters.

The “Rules of the Road” are covered and students take the state test to receive their learner’s permit. Other topics covered will include: basic car control, natural laws, I.P.D.E. process, driver condition, and the effects of drugs and alcohol. Pawnee is a participant in the Secretary of State’s Cooperative Testing Program. At the end of a student’s behind-the-wheel experience, he/she will take a road test with the instructor at Pawnee, enabling that student to receive his/her license upon turning 16.

Health (Semester Course)

Grade Level 9

Course #08051A000

This course presents a comprehensive treatment of personal and community health. The aim is to help students recognize and resolve the questions and problems which they now face and will face as adults. Health occupations are presented to students so that they can explore possible career interests.

Physical Education

Grade Levels 9-12

Course #08001A000

Participation in physical education is required each year in high school with one credit granted each year. Students participate in a balanced program of team and individual sports, recreational activities, physical fitness testing, and weight lifting activities every other day.

SCIENCE DEPARTMENT

| | 7 th Grade | 8 th Grade | Freshman | Sophomore | Junior | Senior |
|---|--------------------------|--------------------------|-------------|----------------------|---------------------------------------|-------------------------------------|
| Accelerated 4 Year College Bound | Science 7 | Science 8 | #CP Biology | Chemistry | CP Biology II Physics | Anatomy |
| 2-4 Year College Bound | Science 7 | Science 8 | #CP Biology | Topics in Science | Chemistry Environmental Science | Physics Anatomy CP Biology II |
| 2 Year Technical | Science 7 | Science 8 | #Biology | Topics in Science | Environmental Science | Chemistry CP Biology II |

#-denotes required course

Course Descriptions

Biology

Grade Level 9

Course #03051A000

Students study biology principles, cells, genetics, micro-organisms. The topics are covered in less detail than in College Prep Biology. Laboratory activities will be used to enhance classroom study.

College Prep Biology

Weighted 5.0 Grade Level 9

Course #03052A000

Pre-requisite: Successful completion of 8th grade science with a B or better.

This course provides a detailed study of biological principles, cells, genetics including the chemistry of DNA, and evolution. If time allows, an introduction to ecological principles will be included. Basic laboratory skills and safety procedures will be introduced. Laboratory activities will be used to enhance classroom study.

Topics in Science

Grade Level 10-12

Course #03202A000

Pre-requisite:

Topics in Science will continue the life science coursework that Biology introduced involving botany and zoology topics for one semester. The other semester coursework involves physical science aspects of basic concepts of physics including motion, forces and energy along with a unit introductory astronomy.

Chemistry

Weighted 5.0 Grade Levels 10-12

Course #03101A000

Pre-requisite: Successful completion of CP Biology with a C or better OR completion of Topics in Science with a B or better.

This course deals with the basic facts and concepts of a beginning chemistry course, but includes both core and advanced work in each of the areas studied. It is aimed at

developing the laboratory and textual content in greater depth. The application of chemistry concepts and the related mathematics are used to accomplish this goal.

College Prep Biology II
Course #03058A000

Weighted 5.0 Grade Levels 11-12

Pre-Requisite: Successful completion of CP Biology and Chemistry or successful completion of 3 science credits.

College Prep Biology II will cover a wide array of topics related to biology of plants including, but not limited to, plant structure and function, classification of plants, biochemical pathways of plants, and the economical/historical significance plants have had on society. It will also cover topics related to biology of animals including, but not limited to, the hierarchy of animals in the animal kingdom starting with sponges and ending with the mammals. Within each group will be discussions of comparative structures of each, evolution and niche.

Environmental Science
Course #03003A000

Grade Levels 11-12

Pre-requisite: Successful completion of Biology and Topics in Science or Chemistry.

This course is a study of the principles of ecology, environmental chemistry, humans' effect on the environment (water, land and air resources), and energy resources. Laboratory activities will be used to enhance classroom study and to introduce laboratory safety procedures.

Physics
Course #03151A000

Weighted 5.0 Grade Levels 11-12

Pre-requisite: Concurrently enrolled in Pre-Calculus or Dual Credit Calculus and a B or better in Chemistry.

Physics is an elective yearlong science course requiring a strong mathematics background. It deals with the mechanics of motion, including velocity, acceleration, forces, motion in two dimension, universal gravitation, momentum and conservation, and work and energy.

Anatomy
Course #03053A000

Weighted 5.0 Grade Level 12

Pre-requisite: Successful completion of CP Biology and Chemistry.

This course is a study of the major organ systems of the human body including anatomical, physiological, and biochemical aspects of these systems. Laboratory activities will be used to enhance classroom study.

SOCIAL STUDIES DEPARTMENT

| | 7 th Grade | 8 th Grade | Freshman | Sophomore | Junior | Senior |
|---|--|--|------------------|--|--|----------------|
| Accelerated 4 Year College Bound | Early American History to 1865 Geography 7 | American History 1865 to the present | World History | #CP American History or #American History *Illinois History *Practical Law I *Practical Law II *Current Events *Humanities Historical Archiving *World Geography | %Sociology(O) %Psychology(E) *U.S. at War I *U.S. at War II | #*Constitution |
| 2-4 Year College Bound | Early American History to 1865 Geography 7 | American History 1865 to the present | World History | #CP American History or #American History *Illinois History *Practical Law I *Practical Law II *Current Events *Humanities Historical Archiving *World Geography | %Sociology(O) %Psychology(E) *U.S. at War I *U.S. at War II | #*Constitution |
| 2 Year Technical | Early American History to 1865 Geography 7 | American History 1865 to the present | World History | #CP American History or #American History *Illinois History *Practical Law I *Practical Law II *Current Events *Humanities Historical Archiving *World Geography | %Sociology(O) %Psychology(E) *U.S. at War I *U.S. at War II | #*Constitution |

#-denotes required course
*-denotes semester course

%-denotes course offered every other year

Course Descriptions

World History

Grade Levels 9-12

Course #04051A000

This course begins with ancient civilization and continues through modern times. The course deals in ideas, events, places, and people that have shaped our world. Emphasis is on political systems, economic systems, and their effect on mankind. Special attention will

also be given to the influence of U.S. Foreign Policy on the world. Included will be map work, quizzes, tests, papers, group work, debate, and presentation.

American History
Course #04101A000

Grade Level 10

This course seeks to develop attitudes for productive citizenship in a democracy and to develop an appreciation for an understanding of America and its people. In discerning the past, we seek to identify with the present, and find the ability to meet the future. Study begins with Reconstruction and concludes with modern times. Students should expect discussion, group work, debate, lecture, papers, quizzes, reading, and presentations.

College Prep American History
Course #04104A000

Weighted 5.0 Grade Level 10

CP American History begins with Reconstruction and concludes with modern times. Students should expect discussion, group work, debate, lecture, papers, quizzes, reading, and presentations. CP American History will include interpretation and analysis of historical data and writings. Students will read, discuss, analyze and write about the assigned readings which may include excerpts from books, specifically biographies, academic journals, and primary sources.

World Geography (Semester Course)
Course #04001A000

Grade Levels 10-12

World Geography is a semester course in which students will study the physical and cultural characteristics of places in the world. Units of study will focus on the five themes of geography, map skills, climate, and regional studies of the seven continents. Methods of instruction include predominately lecture and occasional small group exercises. Assignments include tests, quizzes, and homework assignments.

Current Events (Semester Course)
Course #04064A000

Grade Levels 10-12

Current Events is a semester course in the study of world, national, and local events. The course will focus on economic, social, and political aspects of our world. Current Events students will read and study articles and selections from the newspaper as well as weekly newsmagazines. Assignments include written article summaries, newspaper activities, group activities, etc.

Illinois History (Semester Course)
Course #04105A000

Grade Levels 10-12

This course seeks to develop the knowledge of students concerning their local and state history. We will begin with the history of Illinois prior to it becoming a state to its present state of affairs. Students should expect discussion, group work, lecture, papers, quizzes, reading, and presentations.

Practical Law I (Semester Course)
Course #04162A000

Grade Levels 10-12

Practical Law is designed to give students a basic understanding of law and the legal system in the United States. Students will study practical situations that citizens encounter during a lifetime, as well as various law-related careers. Units of study include an introduction to law and the legal system, the criminal justice system, tort law, family law, individual liberties and rights, and consumer law. Assignments may include tests, quizzes, and career and case studies. Method of instruction includes lecture, group activities, role plays, etc. Students will prepare and participate in a mock trial.

Practical Law II (Semester Course)
Course #04163A000

Grade Levels 10-12

This course will study the fundamental basis of the American legal system: The United States Constitution. We will study the tenets of American constitutional law as well as the historical and current debates about the scope and meaning of the Constitution in relation to the Supreme Court's role in the governing of the United States. Supreme Court decisions will be analyzed with consideration for the historic context, past interpretation, and court's overall consistency in following prior precedent. Students will be able to look at current Supreme Court cases from an analytical standpoint and formulate reasoned hypotheses on how the court will rule in current cases while considering its ideological

Historical Archiving (Yearbook)
Course #11104A000

Grade Levels 10-12

Pre-Requisite: A current member of the yearbook club

This course is a unique opportunity to be part of a team to produce a complete record of an entire school year. The year begins by planning the coverage for the school year including choosing a theme that captures the year in a creative way. The course involves the enhancement of the following skills: photo composition, digital photo organization, investigating, feature writing, editing, computer page layout and design, thematic development, working within a budget, marketing, selling advertisement, and meeting deadlines.

Psychology
Course #04254A000

Grade Levels 11-12

The basic theories of Psychology will be studied, and a better understanding of us and others will be attained. Social problems will be discussed in terms of how they affect us as individuals and how we can look at problems and understand them. Ways we now look at people and new tools for looking at and understanding people, and their behavior are examined. The course includes the study of individuals and their behavior.

Sociology
Course #04258A000

Grade Levels 11-12

Sociology is the study of the development, organization, and problems of society, and social groups. It includes the study of people in relation to groups. The course aims to enable students to acquire deeper knowledge of their social environment and culture.

United States at War I (Semester Course)

Grades Levels 11-12

Course #04109A000

This course is a survey of military history and the interaction between society and military institutions, technology and techniques, from 1763 to World War I. The course will study the interrelationships of warfare, technology and society in American history. The course will focus on such questions as how changing "styles" of warfare, the composition of the military establishment (militias, citizen armies, paid professionals, mercenaries), and the transformations in military technology have impacted upon state and society. We will address these questions through an examination of primary sources in literature, media, film, and visual culture, as well as reading scholarly works.

United States at War II (Semester Course)

Grades Levels 11-12

Course #04109A000

This course is a survey of military history and the interaction between society and military institutions, technology and techniques, from World War II to the present. The course will study the interrelationships of warfare, technology and society in American history. The course will focus on such questions as how changing "styles" of warfare, the composition of the military establishment (militias, citizen armies, paid professionals, mercenaries), and the transformations in military technology have impacted upon state and society. We will address these questions through an examination of primary sources in literature, media, film, and visual culture, as well as reading scholarly works.

Constitution (Semester Course)

Grade Level 12

Course #04161A000

The purpose of this course is to fulfill the state requirements that students pass tests on the Constitution of the United States, the Constitution of the State of Illinois, and on the proper use and display of the American flag.

VOCATIONAL TECHNOLOGY DEPARTMENT

| | 7 th Grade | 8 th Grade | Freshman | Sophomore | Junior | Senior |
|----------------------------------|-----------------------|-----------------------|---|---|--------------|--------|
| Accelerated 4 Year College Bound | Shop | Woodworking 8 | *CAD I *CAD II *Woodworking I *Woodworking II Basic Home Repair | Production Technology Beginning Construction | Architecture | |
| 2-4 Year College Bound | Shop | Woodworking 8 | *CAD I *CAD II *Woodworking I *Woodworking II Basic Home Repair | Production Technology Beginning Construction | Architecture | |
| 2 Year Technical | Shop | Woodworking 8 | *CAD I *CAD II *Woodworking I *Woodworking II Basic Home Repair | Production Technology Beginning Construction | Architecture | |

*-denotes semester course

Course Descriptions

Beginning Construction

Grade Levels 11-12

Course #17001A001 CTE Course

Pre-requisite: Successful completion of any other vocational technology class

Beginning Construction course expose students to the opportunities available in construction-related trades, such as carpentry, masonry, air conditioning/refrigeration, plumbing, and so on. Students learn about the processes involved in construction projects and may engage in a variety of small projects.

CAD I (Semester Course)

Grade Levels 9-12

Course #21103A001 CTE Course

This course is designed to provide students interested in a career in Architecture with information and practical experience needed for the development of job-related competencies. Students are made aware of the career opportunities available in the Architectural Drafting and Architectural Drafting CAD - CADD field. Instruction is

provided in the areas of planning and organizing activities, researching information, performing general office procedures, preparing of preliminary drawings, basic layout, detail drawings, reproduction techniques, producing working drawings, and computer aided drafting. Students are also provided with instruction in producing architectural drawings in the areas of presentation, floor plans, illustration of landscape features, sketching preliminary floor plans, drawing foundation plans and sections, exterior elevations, stair sections, chimney sections, roof sections, finish schedules, preparing plumbing, HVAC and electrical plans, and structural drawings.

CAD II (Semester Course)

Grades 9-12

Course #21103A002 CTE Course

Pre-requisite: Successful completion of CAD I

Instruction is provided in the areas of locating information using computer data files, determination of materials and availability, project conferences, checking plan dimensions, drawing schematic sketches, preparing scale sketches, producing drawings from written/verbal instructions, application of coordinate dimensioning standards, creating drawings using a plotter/printer, producing renderings and/or charts and graphs, and common plan features. Instruction is also provided in the areas of drawing framing plans, wall sections, fireplace sections, door sections, door and window schedules, dimensioning structural steel drawings, constructing column detail drawings, preparation of structural foundation, slab and floor plans, drawing electrical, block, schematic, and electrical connection drawings. Skills relating to CAD include preparation of a basic CAD drawing, building and editing a data base, developing a 3-dimensional drawing and selecting appropriate line work, line weight, and color.

Basic Home Repair and Maintenance

Grade Levels 9-12

Course #17010A000

Home Maintenance courses provide students with knowledge and skills related to devices and systems found in the home. Course content may include electrical wiring, plumbing, window and door repair and installation, wall and floor repair and finishing, furniture repair and finishing, and small appliance repair.

Woodworking I (Semester Course)

Grade Levels 9-12

Course #13054A000

Wood Processing/Production courses include studying the properties of woods and composites made from woods and using these materials to construct usable products. These courses enable students to experience the process of translating an idea into a finished product, with instruction in planning, designing, selecting materials, and using tools and machines.

Woodworking II (Semester Course)
Course #17006A000

Grades 9-12

Woodworking courses introduce students to the various kinds of woods used in industry and offer experience in using selected woodworking tools. Students design and construct one or more projects and may prepare a bill of materials. Correct and safe use of tools and equipment is emphasized. As students advance, they focus on learning the terminology necessary to use power tools successfully, developing skills to safely use these tools in the workshop and becoming familiar with various kinds of wood-finishing materials. Advanced students typically design a project; prepare bills of materials, construct, and finish proposed projects.

Production Technology

Grades 10-12

Course #13052A001 CTE Course

Pre-requisite: Successful completion of any previous vocational technology class

Production Technology is a course designed to foster an awareness and understanding of manufacturing and construction technology. Through a variety of learning activities, students are exposed to many career opportunities in the production field. Experiences in manufacturing include product design, materials and processes, tools and equipment including computers, safety procedures, corporate structure, management, research and development, production planning, mass production, marketing and servicing. In construction, students are exposed to site preparation, foundations, building structures, installing utilities, and finishing and servicing structures.

Architecture

Grades 11-12

Course #21103A001 CTE Course

Pre-requisite: Successful completion of CAD I and CAD II

This course is designed to provide students interested in a career in Architecture with information and practical experience needed for the development of job-related competencies. Students are made aware of the career opportunities available in the Architectural Drafting and Architectural Drafting CAD - CADD field. Instruction is provided in the areas of planning and organizing activities, researching information, performing general office procedures, preparing of preliminary drawings, basic layout, detail drawings, reproduction techniques, producing working drawings, and computer aided drafting. Students are also provided with instruction in producing architectural drawings in the areas of presentation, floor plans, illustration of landscape features, sketching preliminary floor plans, drawing foundation plans and sections, exterior elevations, stair sections, chimney sections, roof sections, finish schedules, preparing plumbing, HVAC and electrical plans, and structural drawings