

**Dates to Remember**

December 2	Noon Dismissal 5th & 6th Dance at 6:00
December 6	Picture Retake Day
December 6	Winter Concert Grades K-4
December 10	Winter Festival 9AM-1PM
December 12	5th-6th Winter Spectacular
December 16	End of Month Assembly
December 19	2PM Dismissal
December 20	End of 2nd Quarter
December 20	Holiday Parties 1:00 PM
December 20	2:00 PM Dismissal
December 21- January 2	Winter Break— No School
December 21	Board of Educa- tion Meeting 7:00 PM
January 4	Student return to school!



# Pawnee Elementary School Newsletter

Dear Parents,

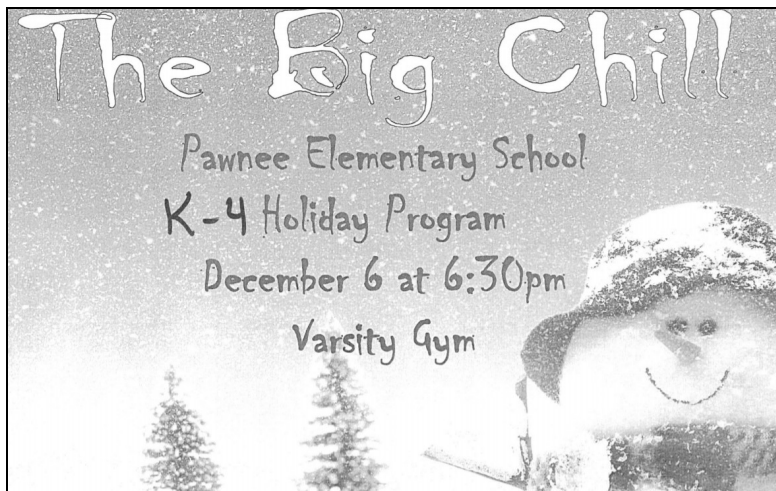
Welcome to December! The winter holidays are such an exciting time for our students, both at home and school! We cannot wait to show off our talents at the Winter Concert and the Winter Spectacular! We hope you enjoy the changes we made this year to our winter concerts. We have such a huge showing of support from our families and community and it is getting harder and harder every year to fit everyone in the room! Hopefully our adjustment to the structure helps ensure everyone can get a good seat.

Have you taken an opportunity to sign up for Virtual Backpack Alerts? If not, please visit our District website and sign up so that you can be notified via email each time the District uploads a flyer about extra-curricular or local opportunities. You can personalize your alerts so that you are only getting the information relevant to your family (Grade School, High School, District, Extra Curricular). You will find the link on the bottom right hand side of the Front Page. Please note, the District is no longer sending paper flyers home for events that are not directly District sponsored. These flyers will be posted on the Virtual Backpack only.

Enjoy this wonderful season and all of the opportunities to make special memories!

Happy Holidays!

*Mrs. Loftus*



## Mark Your Calendar

The window for the state-mandated assessment is April 3rd-7th

This test is given in grades 3-6. Absences for 3rd-6th graders during this window are unexcused.



Lost & Found. We donate items at the end of each month!

**Our school's Lost & Found is full!** On average, two or three additional jackets or coats show up each day. If your student is not bringing their coat/jacket home, please have them check the

**Santa's Secret Shop** will be open Saturday, December 10th (Winter Festival) through Friday, December 16th! Students will visit Santa's Secret Shop during their class Library time during the week of December 12th!

Santa's Shop provides your young one with a way to independently select holiday gifts for their family and friends! Gifts range from \$0.25 to \$15.00 and will be decoratively packaged and labeled by volunteers. A money envelope and additional details will be sent home soon!



## In School Dental Services



**DENTIST**

**Kindergarten, 2nd grade and 6th grade students are required to turn in a dental exam by May 15, 2017.**

Pawnee School is once again offering in-school dental services for eligible students. **"Miles of Smiles" is coming to our school on Monday, January 30th.** Licensed dentists along with hygienists and assistants come to our school to provide this much needed service.

**Please complete, sign, and return the consent form that was recently sent home with students and return it to the school by Wednesday, Dec. 16th if you want your child to receive these services at school on January 30, 2017.**

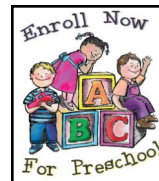


## Recess/Lunch Schedules

**5th-6th Grades:**  
10:40-11:25

**3rd-4th Grades:**  
12:05-12:50

**K-2nd Grades:**  
11:40-12:30



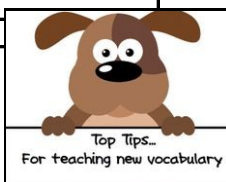
**From the PTO...**

**There are no PTO Meetings in December or January.**

**Please consider joining us in February!**

**Please consider joining the PTO!**

**PTO Meetings are held the first Tuesday of the month at 6:00 PM in the Library.**



## Did you know...

Children who are Birth to Age 5 will retain **70% more** information if you...

- ✓ Slow down,
- ✓ Make eye contact, and
- ✓ Enunciate your words.

**The Pawnee Preschool Program was awarded a State Preschool Expansion Grant!** This means that four year old students who meet eligibility requirements can attend a FULL DAY preschool program. We will continue to operate the HALF DAY Grant Program for at-risk three and four year olds, as well as the half day Tuition Program for students who are not grant eligible.

Our **PreK Spring Screening** is scheduled for March 30th and 31st. Students are eligible for the PreK Program as soon as they turn three years old. If you would like your child to be screened for the Program please call the Grade School Office at 625-2231.